

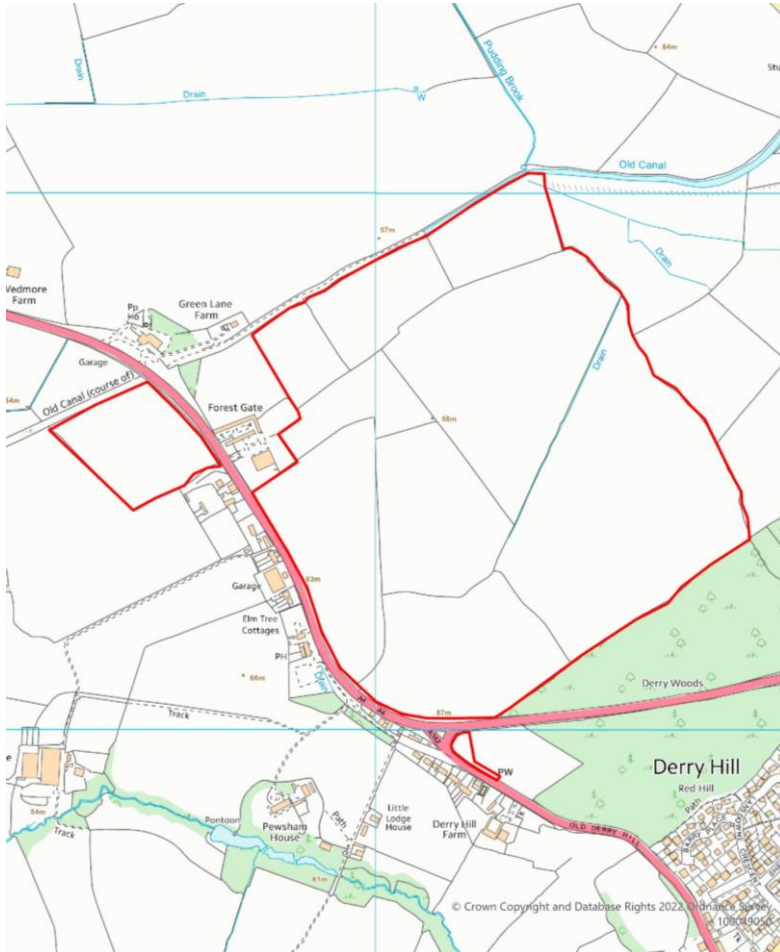
# Strategic Planning Committee

2<sup>nd</sup> March 2023

## PL/2021/06112 - Land at Forest Gate, Pewsham, Chippenham, SN15 3RS

The development of a solar farm of up to 49.9 MW of generating capacity, comprising the installation of solar photovoltaic panels and associated infrastructure including customer cabin, customer substation, DNO substation and equipment, inverter and transformer substations, spare part container, associated battery storage, access tracks, fencing, security cameras, landscape planting and associated works

**Recommendation: Approve with Conditions**

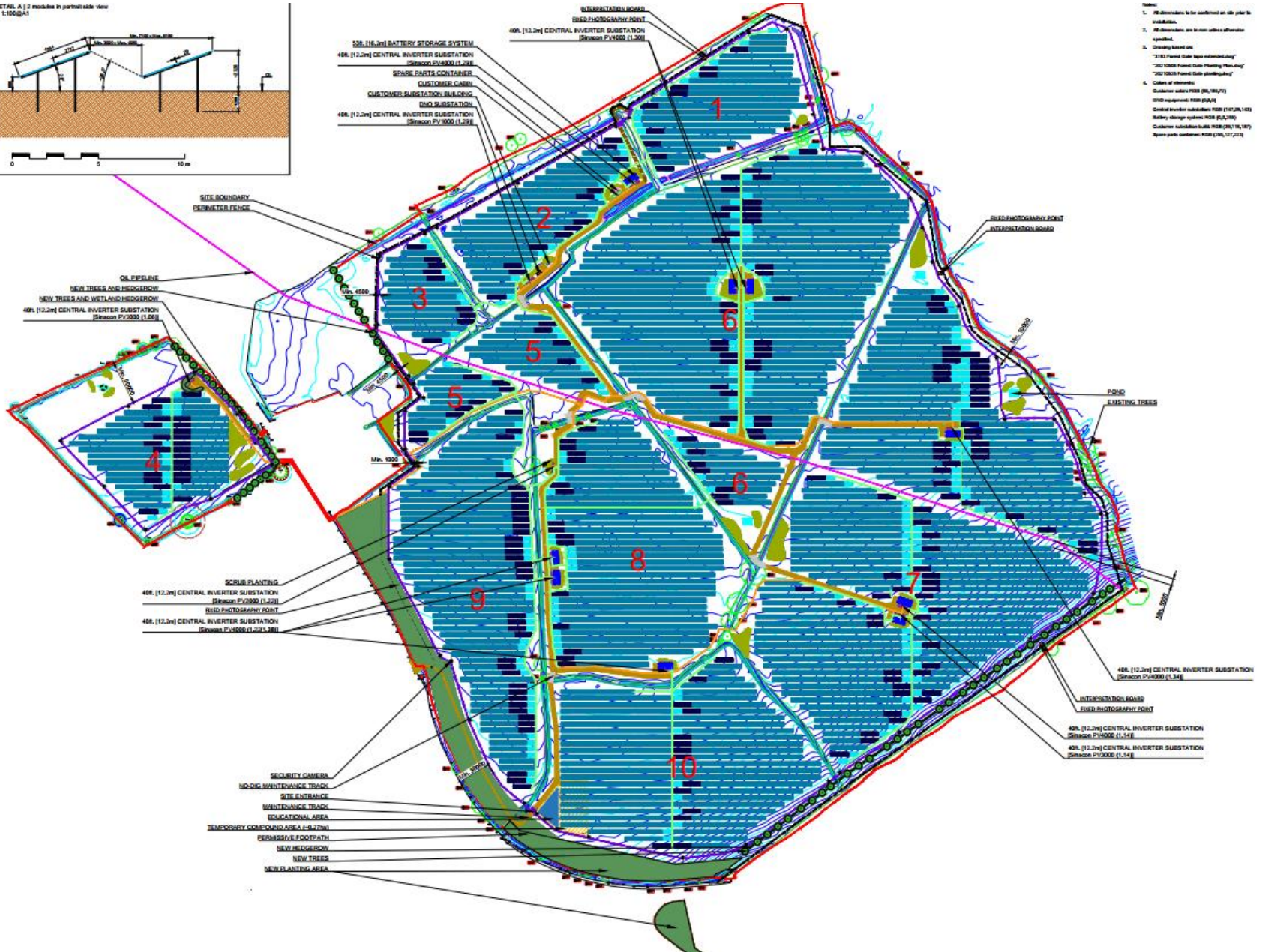
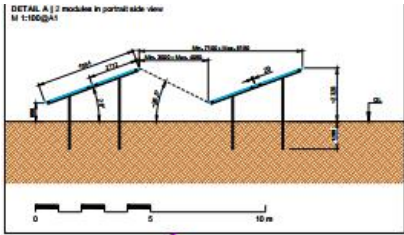


Site Location Plan



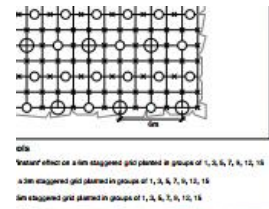
Aerial Photography

# PV Solar Layout



- Notes:**
1. All dimensions to be confirmed on site prior to installation.
  2. All dimensions are in mm unless otherwise specified.
  3. Drawing based on:
    - "2018 Parcel Data Map - 10/10/2017.dwg"
    - "2018003 Parcel Data - Planting Plan.dwg"
    - "2018003 Parcel Data - planting.dwg"
  4. Codes of materials:
    - Customer cables: PSB (38, 180, 71)
    - DCO equipment: PSB (5, 2)
    - Central inverter substation: PSB (14, 26, 143)
    - Battery storage cabinet: PSB (6, 206)
    - Customer substitution sub: PSB (36, 14, 187)
    - Spare parts container: PSB (108, 17, 212)

# Planting Plan



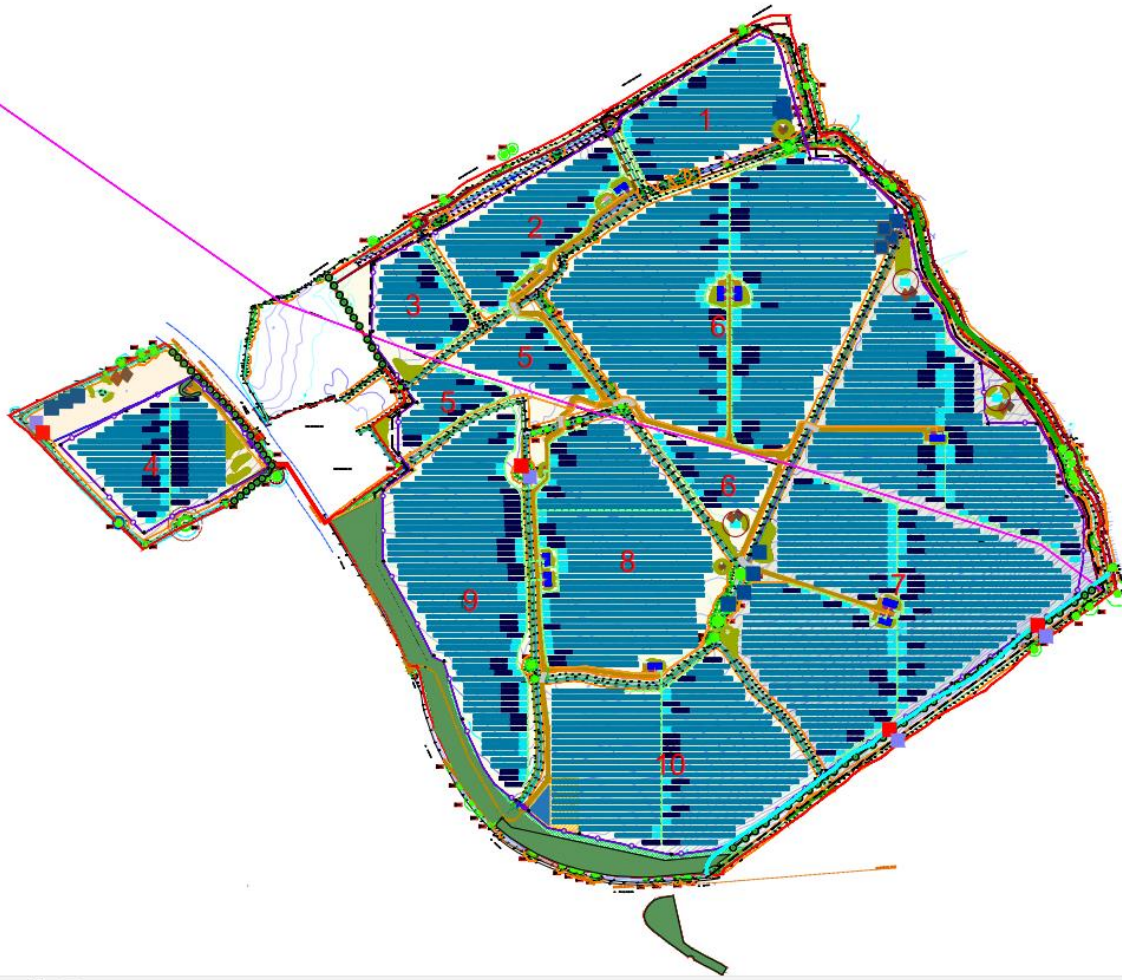
Water effect on a tree staggered grid planted in groups of 1, 3, 6, 7, 8, 12, 15  
 Water effect on a tree staggered grid planted in groups of 1, 3, 6, 7, 8, 12, 15  
 Water effect on a tree staggered grid planted in groups of 1, 3, 6, 7, 8, 12, 15

more facts



NO.	PLANT SPECIES	QUANTITY	PLANT SIZE	PLANT TYPE
1	QUERCUS robur	5	100cm	Tree
2	ACER campestre	2	100cm	Tree
3	CRATAEGUS monogyna	3	100cm	Tree
4	CARPINUS betulus	1	100cm	Tree
5	PRUNUS avium	2	100cm	Tree
6	QUERCUS robur	2	100cm	Tree
7	ACER campestre	3	100cm	Tree
8	CRATAEGUS monogyna	2	100cm	Tree
9	CARPINUS betulus	1	100cm	Tree
10	PRUNUS avium	2	100cm	Tree
11	QUERCUS robur	1	100cm	Tree
12	ACER campestre	2	100cm	Tree
13	CRATAEGUS monogyna	3	100cm	Tree
14	CARPINUS betulus	1	100cm	Tree
15	PRUNUS avium	2	100cm	Tree
16	QUERCUS robur	2	100cm	Tree
17	ACER campestre	2	100cm	Tree
18	CRATAEGUS monogyna	2	100cm	Tree
19	CARPINUS betulus	1	100cm	Tree
20	PRUNUS avium	2	100cm	Tree
21	QUERCUS robur	1	100cm	Tree
22	ACER campestre	2	100cm	Tree
23	CRATAEGUS monogyna	3	100cm	Tree
24	CARPINUS betulus	1	100cm	Tree
25	PRUNUS avium	2	100cm	Tree
26	QUERCUS robur	2	100cm	Tree
27	ACER campestre	2	100cm	Tree
28	CRATAEGUS monogyna	2	100cm	Tree
29	CARPINUS betulus	1	100cm	Tree
30	PRUNUS avium	2	100cm	Tree

# Ecology



## Ecology Keys:

- Bat boxes (x4)
- Bird boxes (x4)
- Hedgerow
- ◆ Hibernacula (x4) & Log Pile (x4)
- Scrape
- Scrub
- Solitary Bee Hotels (x14)
- Wetland hedging
- Existing Grassland
- Diverse Grassland
- Woodland
- Scrape and Pond

## Buffer Keys:

- 4.5m buffer
- 10m buffer
- 15m buffer
- 50m buffer

*\*Refer to EDR1004-100H PV Layout for technical keys*

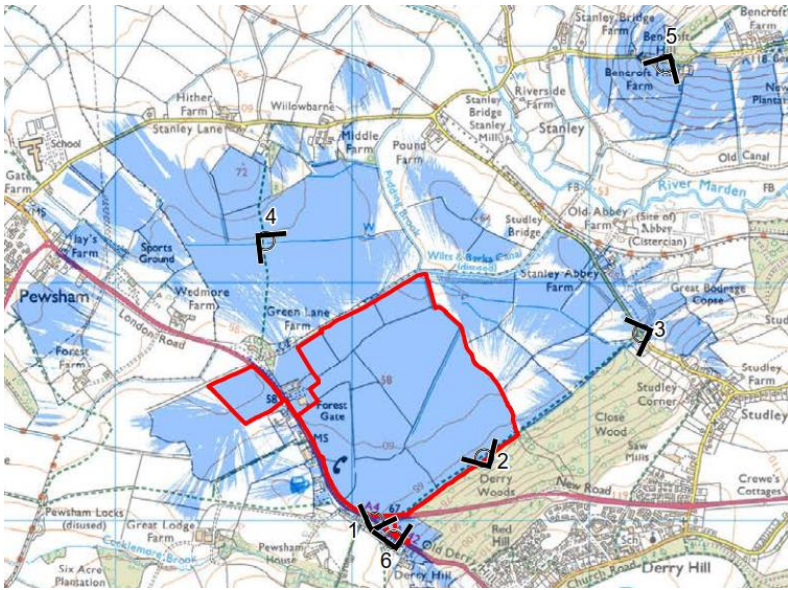
# Photographs of the area



# Photographs of the area



# LVIA View points and Photomontages





# LVIA View points and Photomontages



# LVIA View points and Photomontages



# LVIA View points and Photomontages



# LVIA View points and Photomontages



# Highways access and construction traffic route

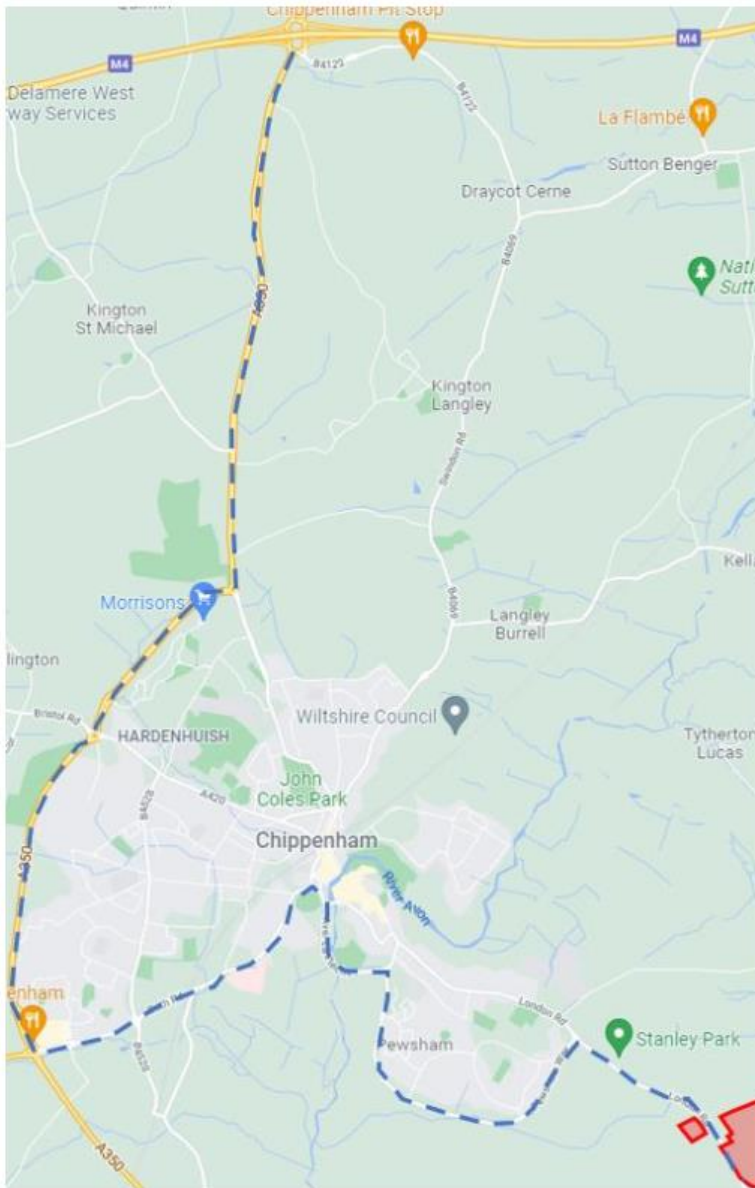
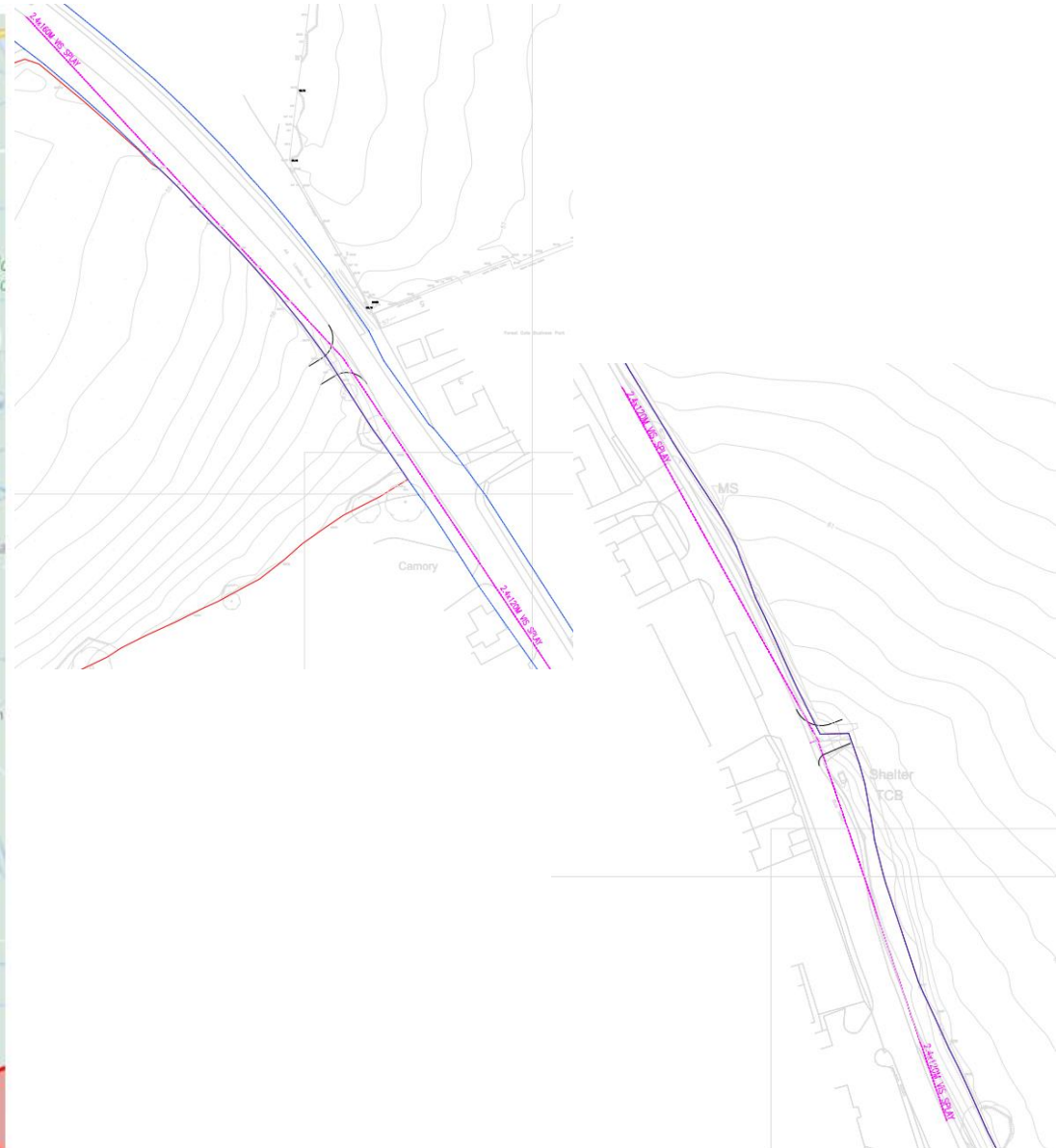


Figure 2: Recommended Route



# Photo of position of accesses for the site



# Strategic Planning Committee

2<sup>nd</sup> March 2023